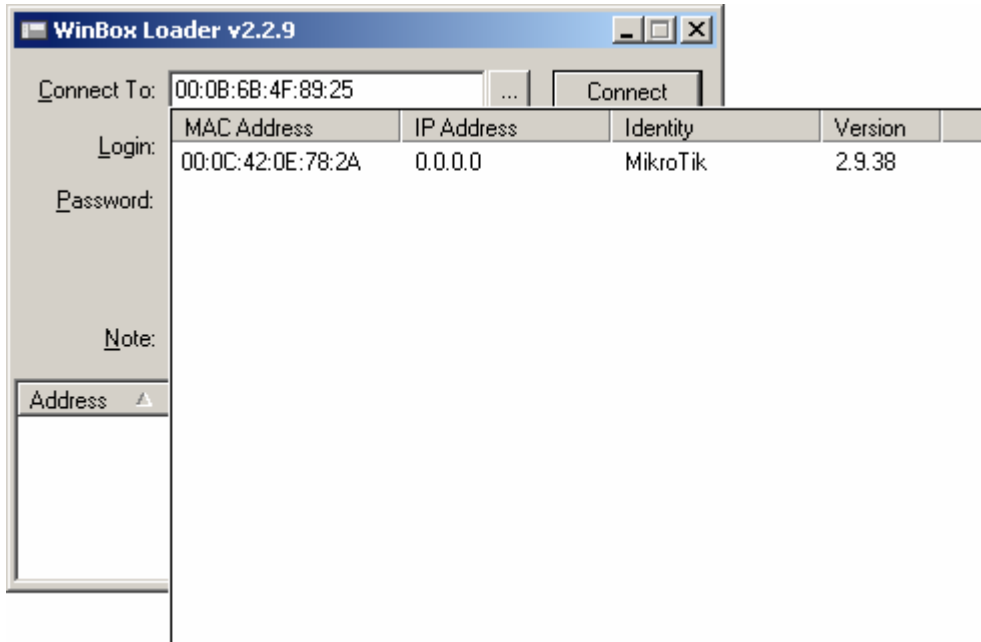


Configuration Mikrotik Client

Download the winbox

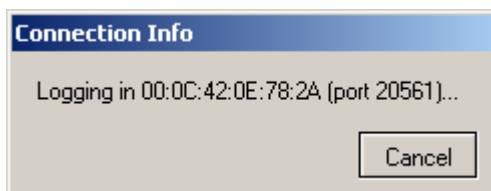
1. Accessing the MikroTik CPE

- 1) Power up your MikroTik
- 2) Connect the AP directly to a PC using a cross over cable, or directly to a hub / switch
- 3) Run Winbox
- 4) Click on the '...' button to view connected MikroTik devices

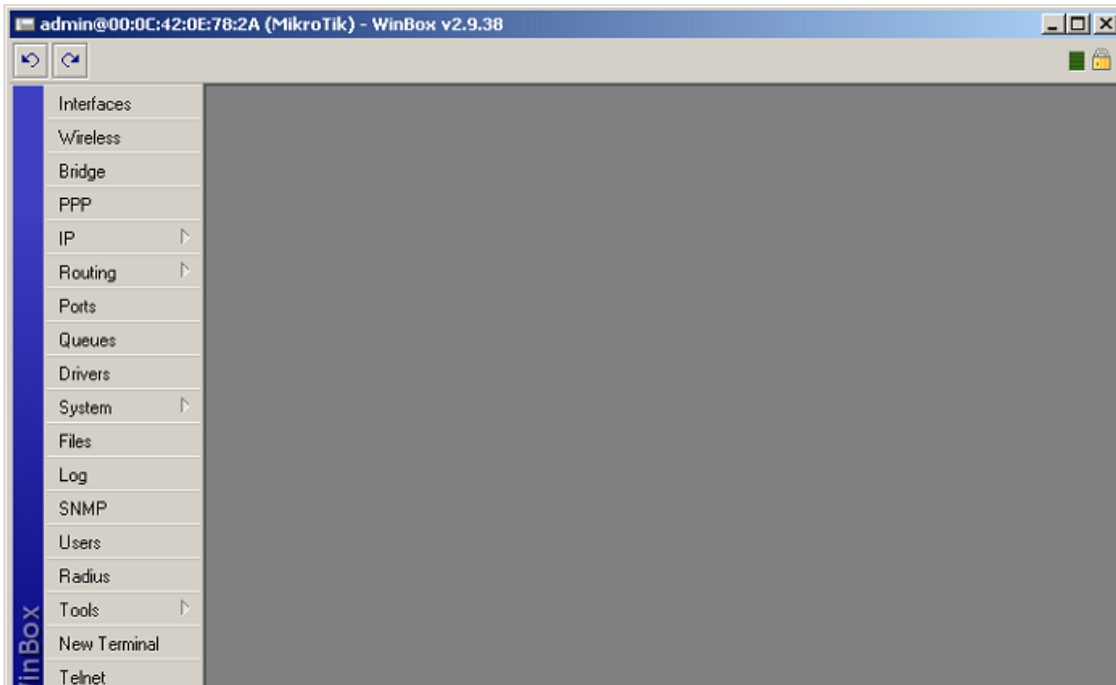


Step 2

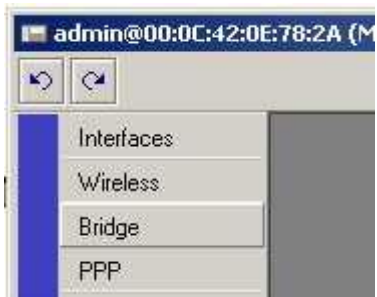
- 5) Select the device and click on connect



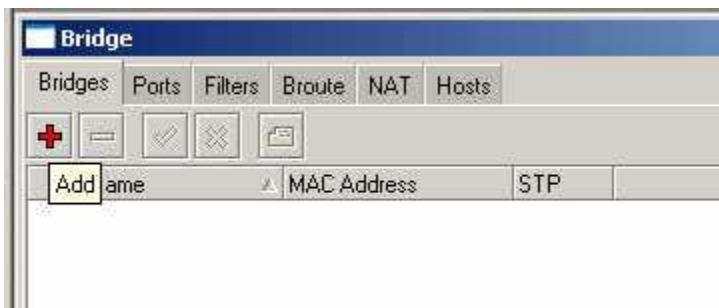
6) You are now connected to your MikroTik CPE



1) Select Bridge



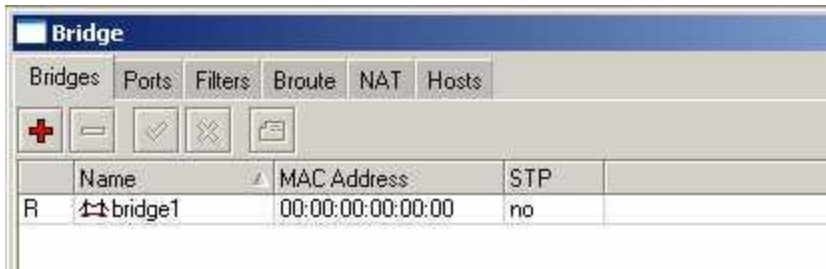
2) Click on the red '+' to add a new bridge



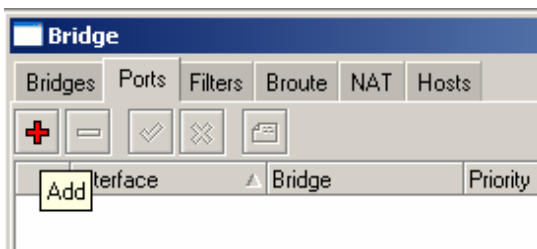
3) Accept all defaults and click on ok



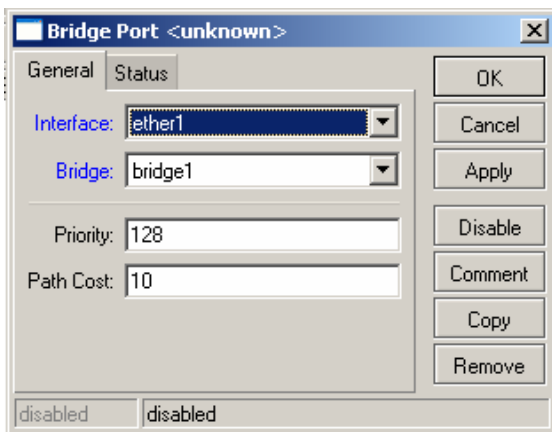
4) Click on the Ports tab



5) Click on the red '+' to add a new port



6) Select Interface -> ether1, Bridge -> bridge1

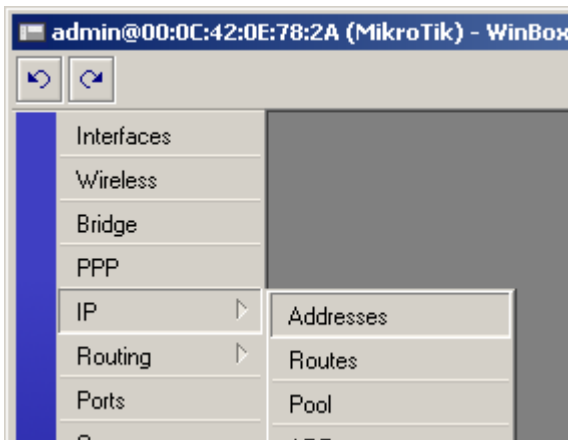


7) Click on the red '+' again. This time select Interface -> wlan1, Bridge -> bridge1

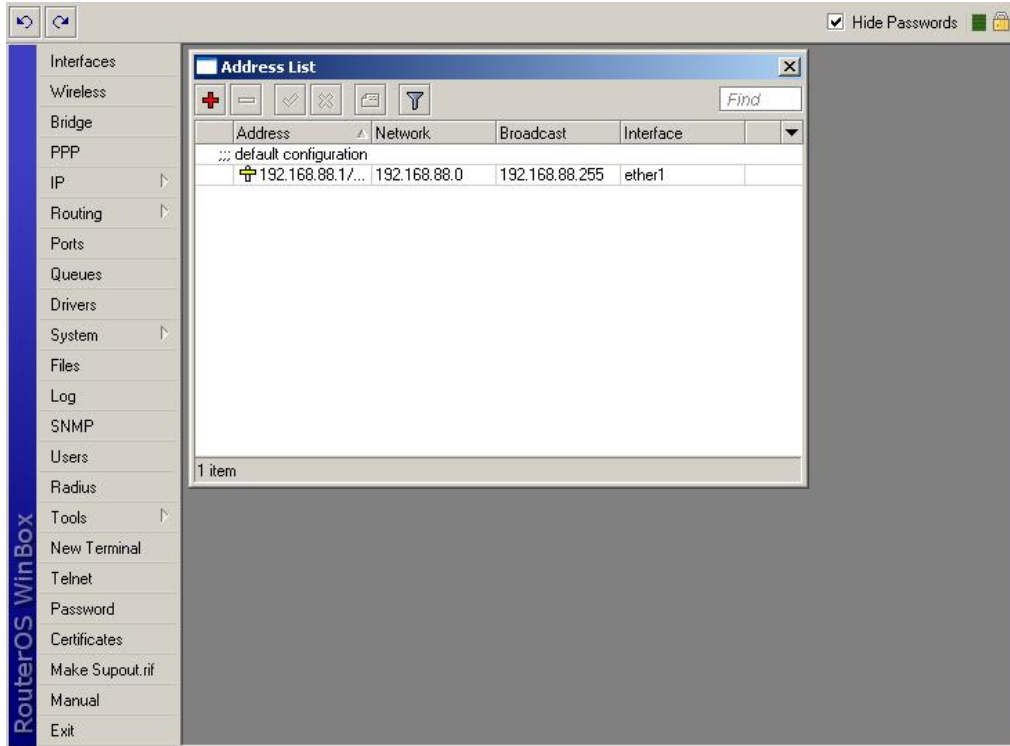
Interface	Bridge	Priority	Path Cost	Status
ether1	bridge1	128	10	forwarding
wlan1	bridge1	128	10	disabled

9) Close the Bridge window

9) Click on IP -> Addresses (Default IP Address is 192.168.88.1)



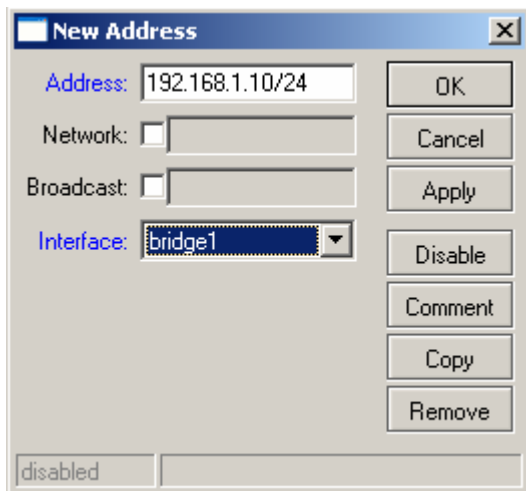
10) Click on the red '+' to add an address



11) Enter the ip address ie (192.168.88.1/24) in the address field

12) Enter the ip address 192.168.1.10/24 in the address field

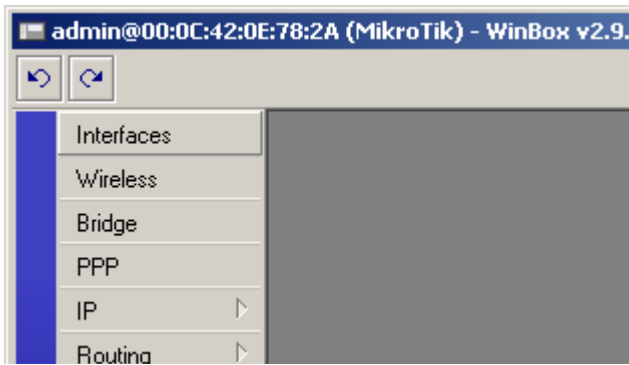
13) In the interface drop down list box select bridge 1, then click on ok



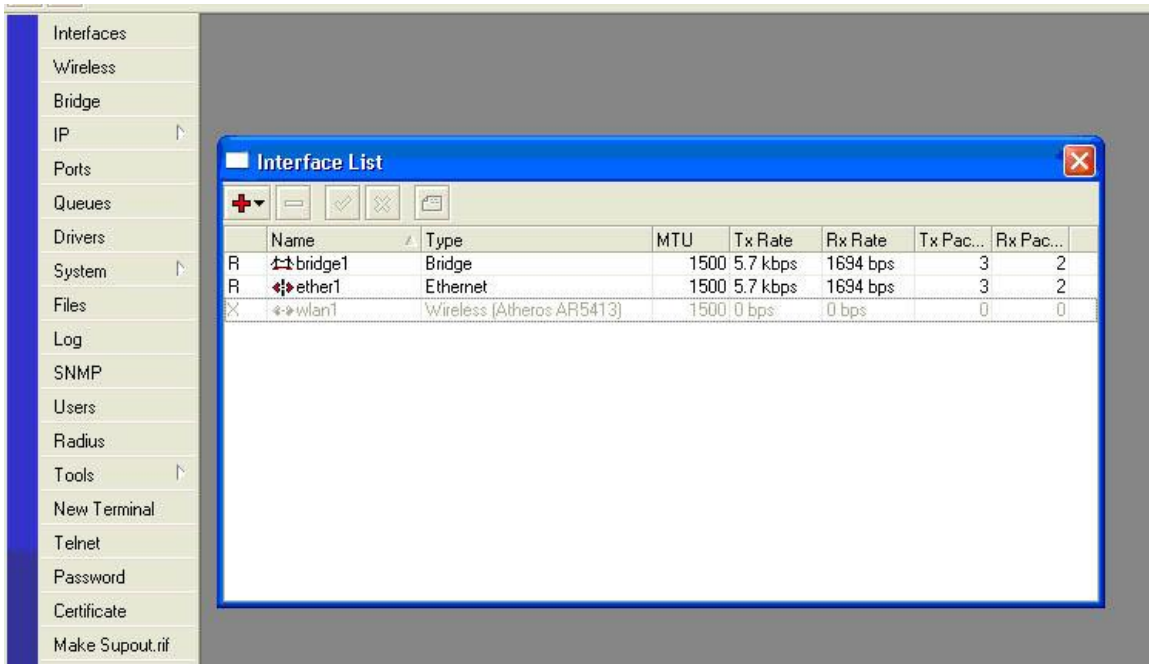
NOTE All address formats in Mikrotik are in address/subnet format, i.e. 192.168.1.1/24. For a more detailed explanation of this notation please see the appendix at the end of this document.

14) Close the Address List dialog box

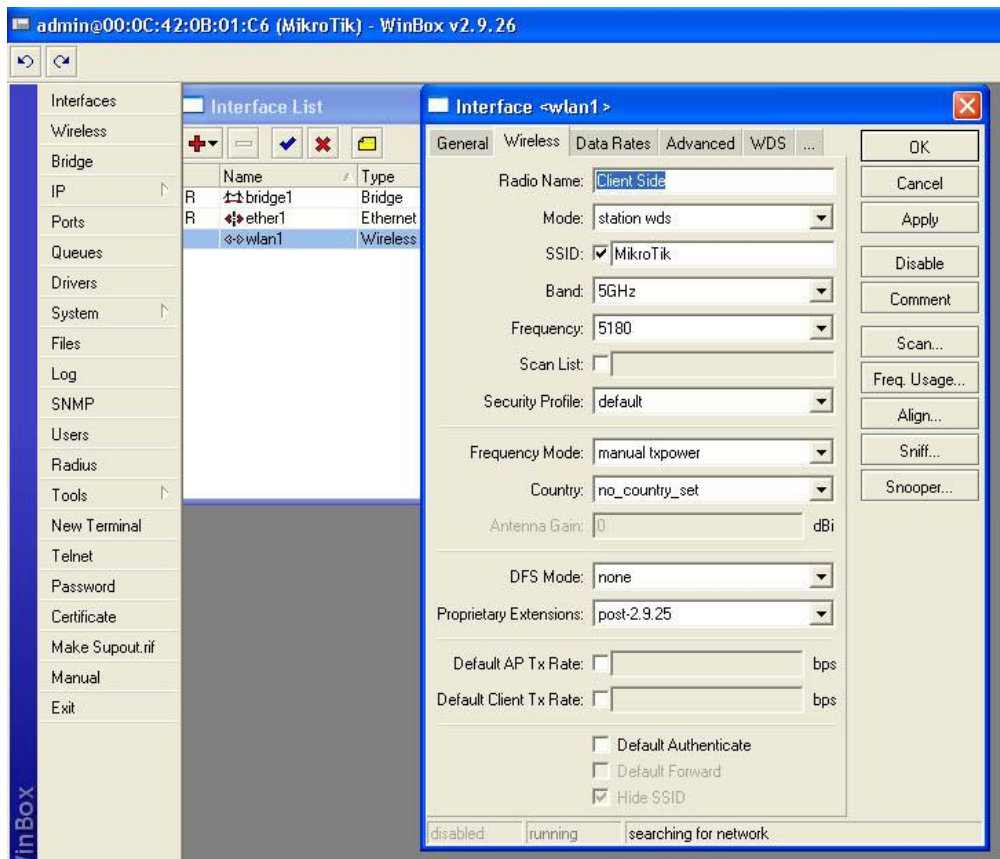
15) Select Interfaces



16) enable the wlan1 and Double click on wlan1 to configure

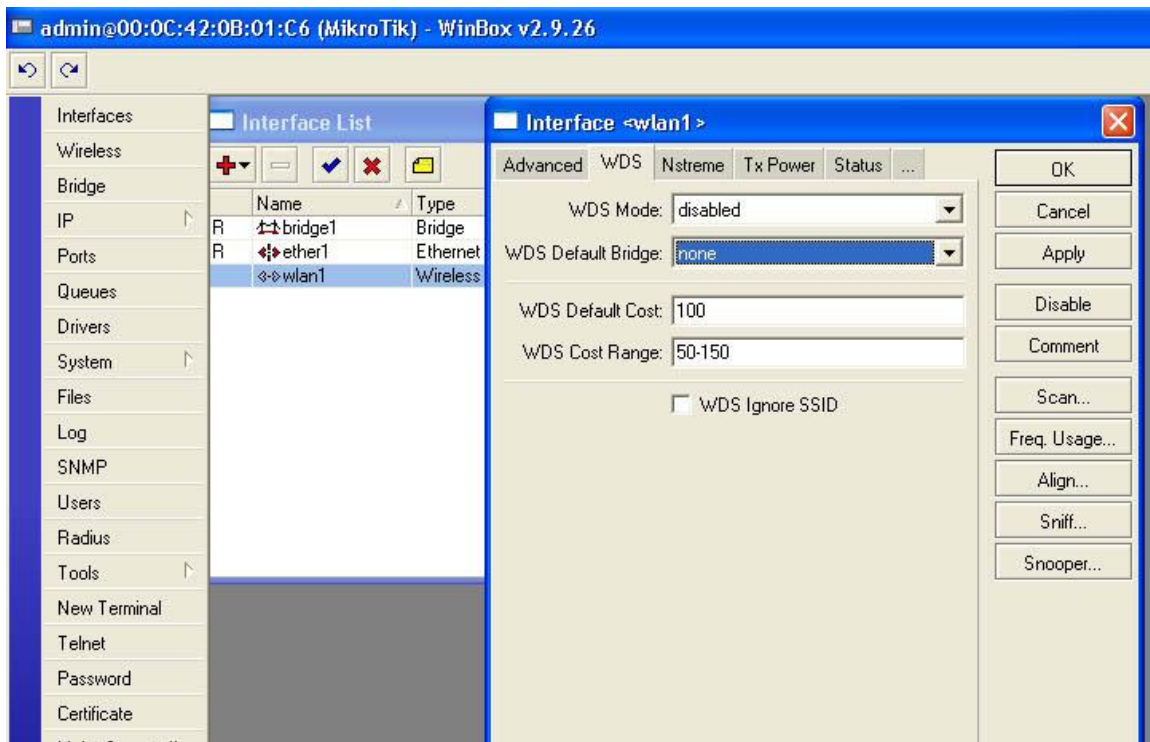


17) Click on the wireless tab



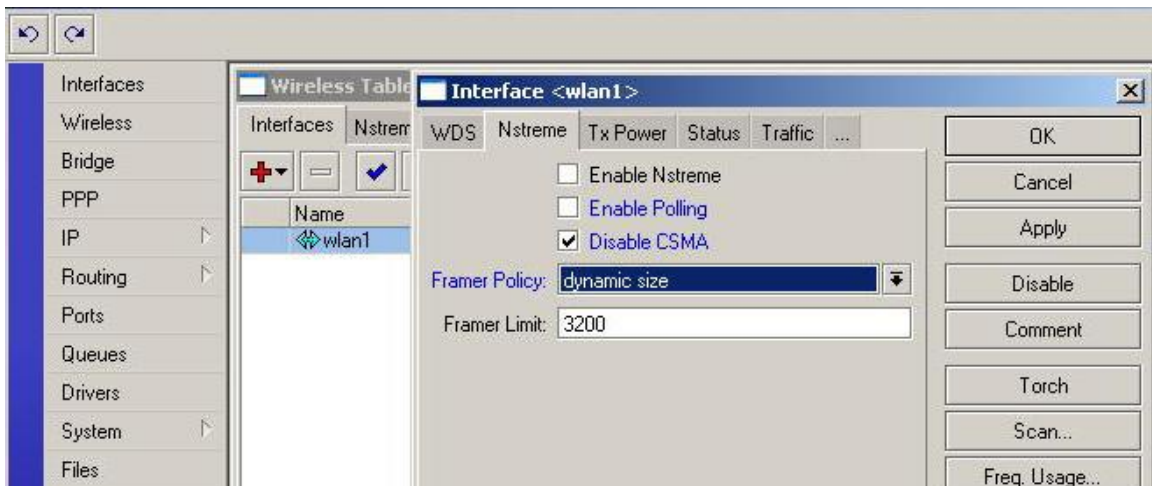
- 18) In the Mode drop down select station wds
- 19) Enter the desired SSID in the SSID field
- 20) In the Band drop down select either 5GHz
- 21) In the Frequency field enter the desired frequency
- 22) Click on ok to save changes

23) Click on the WDS tab



- 24) Make WDS Mode to disable
- 25) Make WDS Default Bridge to none

26) Click on the Nstream tab



- 27) Disable to Enable Nstream
- 28) Disable to Enable Polling
- 29) Disable CSMA
- 30) Make Frammer Policy to Dynamic size

Your CPE is ready after matching SSID with AP. Client will connect with Access Point (AP). AP mac address is register in the register table of wireless after client connect to AP. Lower the value more better in Signal Strength. Always try to minimize the signal strength.

The screenshot shows the RouterOS WinBox interface. On the left is a vertical menu labeled "RouterOS WinBox" with various system management options. The main window is titled "Wireless Tables" and contains several tabs: "Interfaces", "Access List", "Registration", "Connect List", and "Security Profiles". Below the tabs are buttons for "Copy to Access List" and "Reset". A table displays the following data:

Interface	Radio Name	MAC Address	AP	Tx/Rx Rate	Last Activit...	Signal Strengt...	W...	Uptime
::: Client CPE								
PTP-S...	Avenues Tele...	00:0C:42:05:83:A2	no	6Mbps	0.010	-88	yes	00:00:21